

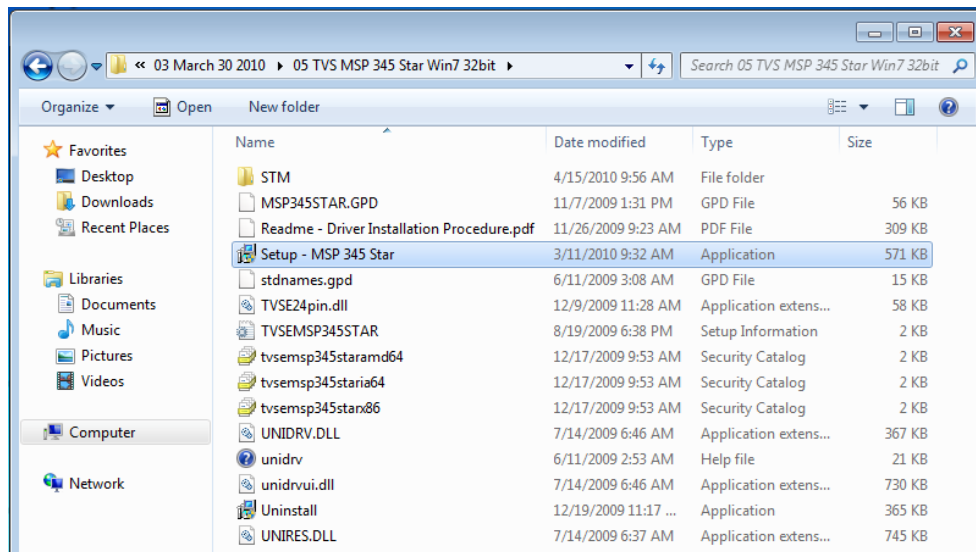
Scope : Driver Installation Procedure for TVSE MSP Series (9wire & 24wire printers)

TVSE MSP Series - Driver Software Installation / Un-installation Procedure (Windows 7)

Installation Procedure

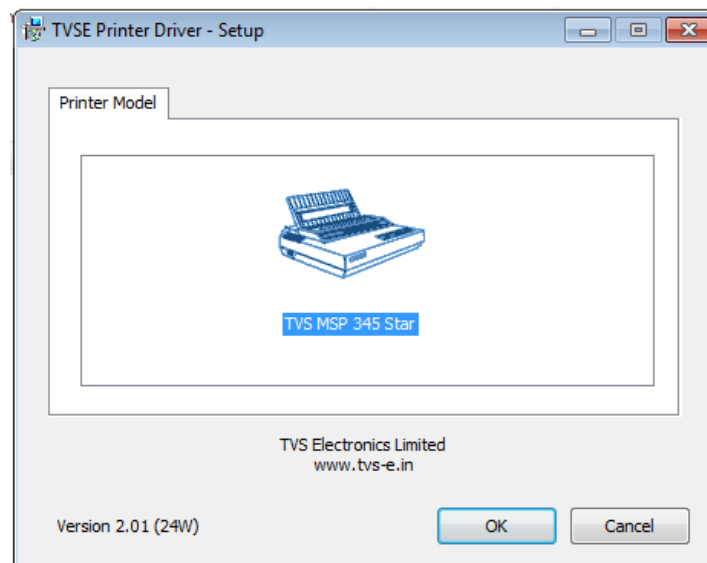
Step: 1

- Run the Printer Setup Utility, for example "Setup – MSP 345 Star.exe"
- Click 'Yes' for 'User Account Control' Permission.



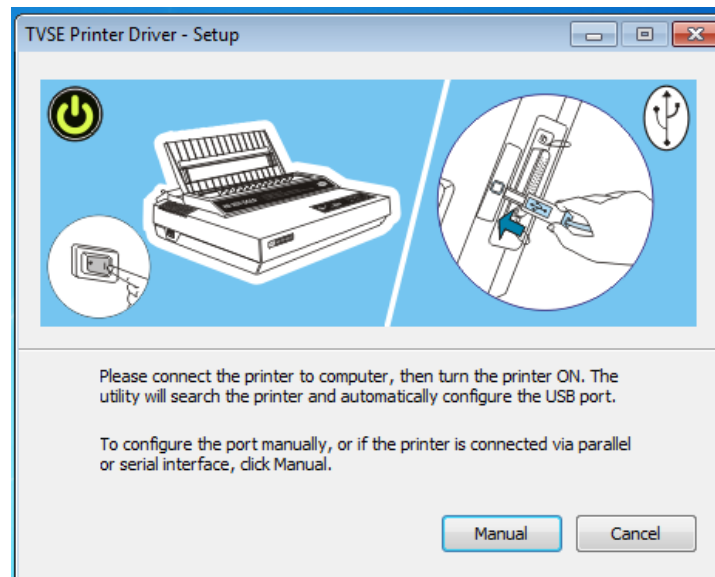
Step: 2

- Click Ok button



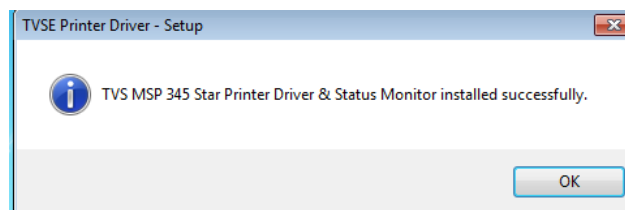
Step: 3

- The below search window will appear, in case of USB; connect the USB cable to the PC and Printer then switch ON the printer.
- If the printer is already switched ON, unplug the USB cable and plug in once again.
- For Parallel & Serial interface click "Manual" button

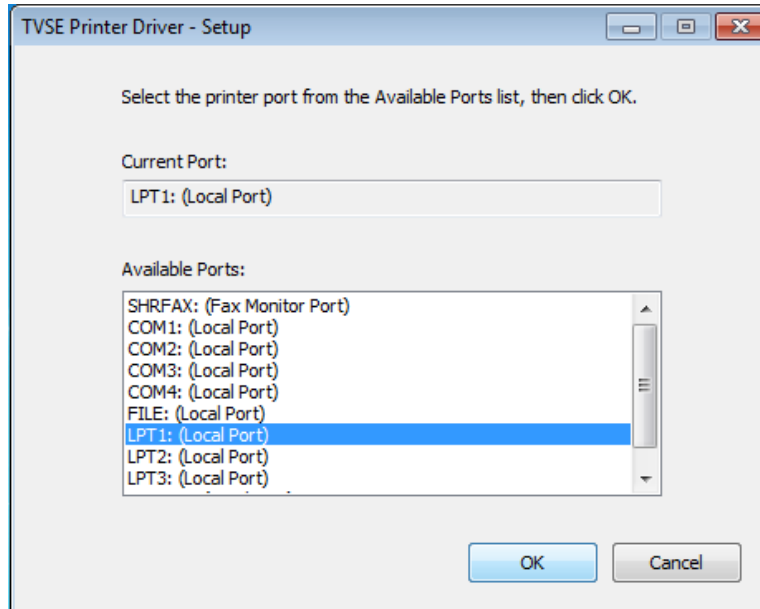


Step: 4

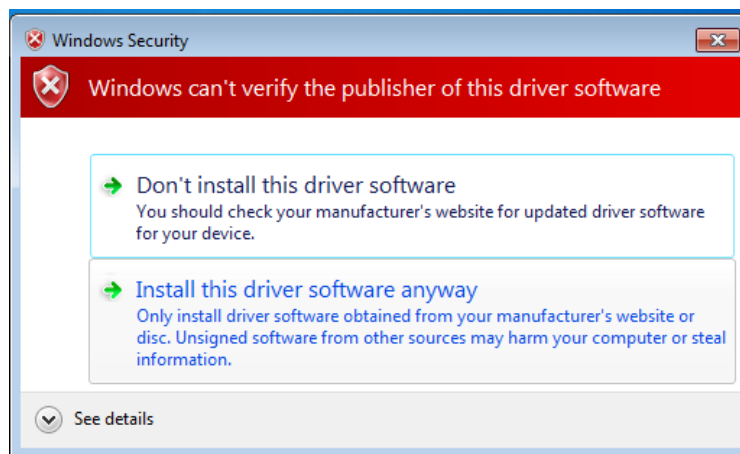
- For USB, the software will automatically search the USB Port and install the drive.
- Click Ok to complete the installation Process.



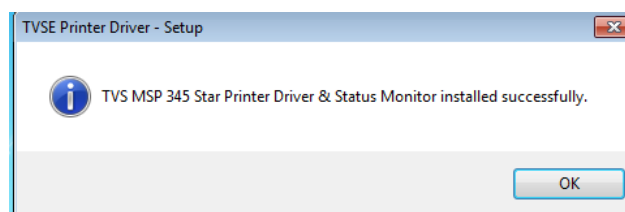
- For Parallel and Serial port choose the required port and click OK button.
- By default "LPT1" port will be selected.



- Choose "Install this driver software anyway" to continue installation.



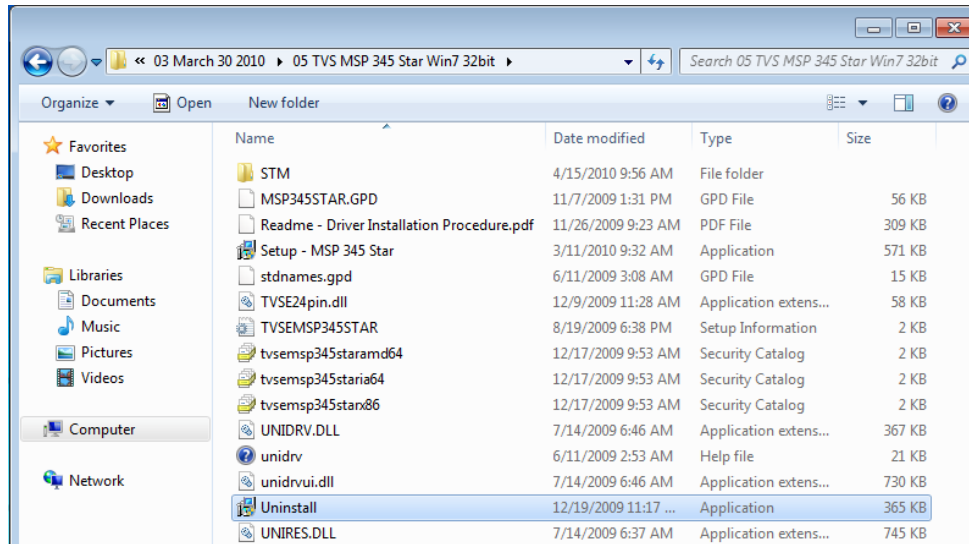
- Click Ok to complete the installation Process.



Un-Installation Procedure

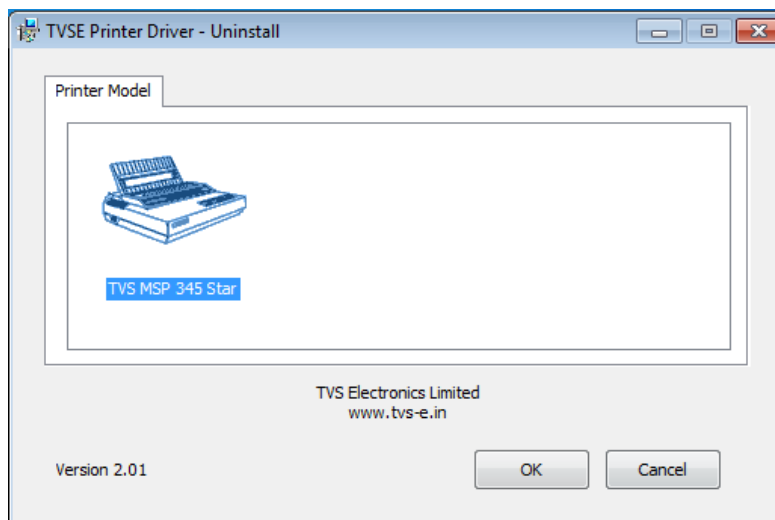
Step: 1

- Run the Uninstall.exe

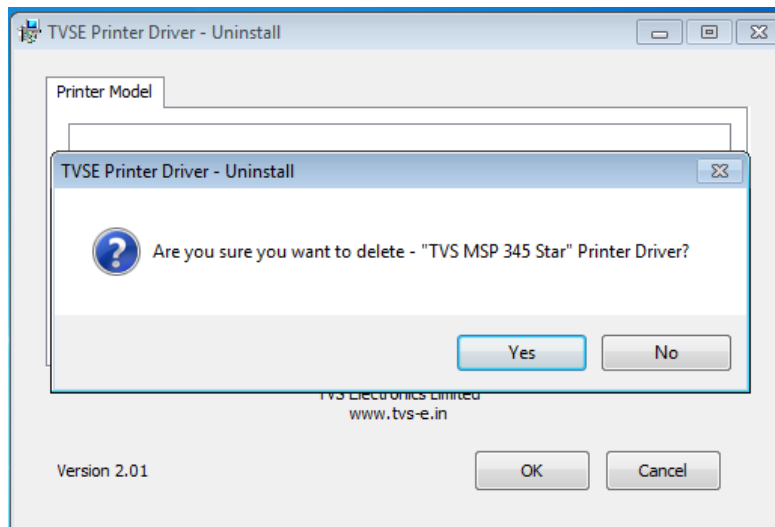


Step: 2

- Double Click the Icon to un-install the driver.



- Click "Yes" to continue deleting the printer, if not click "No" to cancel the process.



- Click "Ok" to complete the process.

